



Live and
study in
New York
City.

International Admissions

Tuition & Fees • 2025 - 2026 Academic Year

Undergraduate Tuition & Fees

Tuition Fees:
\$22,750.00 per year

Registration Fees:
\$900.00 per year

International Student Fee:
\$450.00 (First semester only)

Graduate Tuition & Fees

MBA, Business Analytics, Computer Science,
Cybersecurity
\$1,108.00 per credit

Marriage & Family Therapy, Mental Health
Counseling, Psychology, School Psychology
\$1,082.00 per credit

Communication Disorders, Occupational
Therapy, Physical Therapy
\$1,191.00 per credit

Registration Fees
\$225.00 per term (Less than 12 credits)

International Student Fees
\$450.00 (First semester only)

Room & Board - Double Occupancy

Westchester Campus
\$15,950.00 per year

Manhattan Campus
\$17,350.00 per year

Payment Deadline for Each Term



FALL

Three weeks prior to
first day of classes.

WINTER

Upon registration.

SPRING

Three weeks prior to
first day of classes.

SUMMER

Three weeks prior to
first day of classes.

As an F-1 international student, you provide financial documentation to show that you or your sponsor have the ability to cover the costs of tuition and fees. **As a result, international students are not eligible for payment plans.**

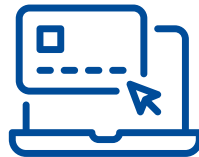
In addition to the regular tuition and fees, all international students at Mercy University must pay a one-time International Student Fee (\$450), which is due with the first tuition payment.

HOW CAN I MAKE A PAYMENT?

To make a payment for tuition, room & board, etc. you have the following options. Please note that you will not be charged for classes until you register. Also, you will not be charged for room & board until you have been assigned a room. If you make a payment on your account when there is nothing due, the amount will be returned to you in the form of a check. If you are wiring money internationally, you **MUST INCLUDE** your full name and CWID (College-Wide ID Number).

**PAYMENT IN PERSON:**

Go to the Student Financial Services at Dobbs Ferry Campus.

**PAYMENT ONLINE:**

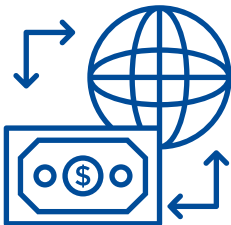
Log into your Mercy Connect Account at <https://connect.mercy.edu>.

1. Select "Administrative Services" Tab
2. Select "Student and Financial Aid"
3. Under "Student Accounts," select "Account Summary by Term."
Click on the appropriate term.
4. Select the appropriate link at the bottom of the page. Pay by credit card.
5. Complete information and submit payment.

**PAYMENT BY CHECK:**

Be sure to include your Mercy CWID number on your check and mail to:

Mercy University
Attn: Office of Business Operations
555 Broadway
Dobbs Ferry, NY 10522

**PAYMENT BY WIRE TRANSFER:****• DOMESTIC WIRES – US DOLLARS FROM WITHIN US BORDERS**

- o Receiving bank: TD Bank NA, 2035 Limestone Rd, Wilmington, Delaware 19808
- o Receiving ABA: 0311-0126-6
- o Beneficiary: MERCY COLLEGE 555 Broadway, Dobbs Ferry, NY 10522
- o Beneficiary Account Number: 7916045698 - MC General Fund

• INTERNATIONAL WIRES - US DOLLARS FROM OUTSIDE US BORDERS

- o Receiving bank: TD Bank NA, 2035 Limestone RdWilmington, Delaware 19808
- o Receiving ABA: 0311-0126-6
- o Beneficiary: MERCY COLLEGE 555 Broadway, Dobbs Ferry, NY 10522
- o Beneficiary Account Number: 7916045698- MC General Fund

• INTERNATIONAL WIRES - FOREIGN CURRENCY

- o Receiving bank: The Toronto-Dominion Bank, Toronto, Ontario, Canada M5K 1A2
- o Receiving SWIFT: TDOMCATTOR
- o For further credit to: TD Bank NA, 2035 Limestone RdWilmington, Delaware 19808
- o Beneficiary Bank SWIFT: NRTHUS33XXX
- o Beneficiary: MERCY COLLEGE 555 Broadway, Dobbs Ferry, NY 10522
- o Beneficiary Account Number: 7916045698- MC General Fund

**FOR MORE INFORMATION AND WIRE TRANSFER INSTRUCTIONS,
E-MAIL: WIRETRANSFER@MERCY.EDU**

When sending money via wire transfer, be sure to account for bank fees. Mercy's bank charges \$15 (USD) for incoming, international wire transfers. Check with your bank to confirm any fees associated with outgoing, international wire transfers. Please ensure that you add any bank fees to the principal amount that you are sending. If the fee amount is not added, it will be deducted from the amount of money sent. Additionally, please include your full name and CWID when sending the transfer. This will ensure that the money you are sending will be applied to your student account at Mercy University.